

GAIA

Uninterruptible Power Supply 1, 2 e 3 Kva

Características

- ❖ On line de dupla conversão
- ❖ Rack 19" (2U – 89 mm) ou torre
- ❖ Largo Range de Entrada (100~275Vac).
- ❖ Desligamento de Emergência Remoto (RJ11)
- ❖ Largo Range de Entrada sem usar as baterias (100~275Vac à plena carga).
- ❖ Forma de onda de saída – SENOIDAL PURA
- ❖ Baixa distorção harmônica (DHT<5%)
- ❖ Partida sem rede elétrica.(battery start)
- ❖ Expansão do banco de bateria por módulos
- ❖ Comunicação RS232
- ❖ Led de sinalização
- ❖ Display LCD mult-linguas
- ❖ Alarme sonoro
- ❖ **Alta confiabilidade :**
- ❖ **Menor custo:**
Alto fator de potência de entrada (fp>0,99)
- ❖ Tensão de entrada e saída :200,208,220,230 e 240 v
- ❖ Baterias internas



Aplicações :



Servidores



Rede



Segurança



Bancos



Hospitais

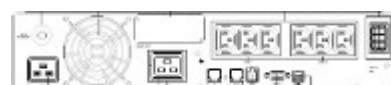


Indústrias

Vista trazeira



GA 1000 1 Kva



GA 2000 e GA 3000 2 e 3 Kva

Painel LCD



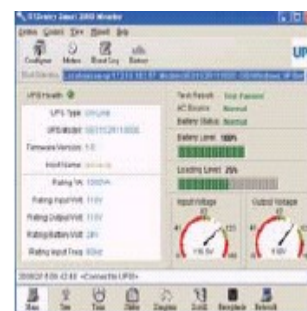
Montagem em rack



SOFTWARE DE GERENCIAMENTO

Compatível com os sistemas operacionais :

MICROSOFT WINDOWS 9.x / 2000 / 2003 / XP / Vista , OPENLINUX , SUSI , REDHAT , SOLARIS SPAC, SOLARIS X86 , FREEBSD , HPUX , AIX , MACosX , OPENSERVER



ESPECIFICAÇÕES TÉCNICAS

Model		1KVA	2KVA	3KVA
Capacity		1KVA/800W	2KVA/1600W	3KVA/2100W
INPUT	Rated Voltage	200V, 208V, 220V, 230V, 240V		
	Voltage Range	160V~275V (Full Load) ; 130V~160V (70% to 100% Load Linearly De-rating)		
	Frequency	50Hz/60Hz (±5 Hz)		
	Power Factor	≥0.97		
Output	Voltage	200V, 208V, 220V, 230V (default), 240V		
	Frequency	50 (default)/60Hz		
	Voltage Regulation	+2%		
	Frequency Accuracy	±0.05 Hz		
	Wave Form	Pure Sine Wave		
	Transient Response	±10% (10%~90% Linear Load)		
	THD	≤3%(Linear Load); ≤6%(Computer Load)		
	Overload Capacity	105%-125% for 3mins; 125%-150% for 30secs; >150% for 0.5sec		
	Crest Factor	3:1		
	Efficiency (AC-AC)	≥ 87%		
Outlet	Receptacle	IEC320 C13×3×2	IEC320 C13×3×2 + IEC320 C19×1	IEC320 C13×3×2 + IEC320 C19×1
	Battery Voltage	24 V	48V	72V
Battery	Battery Type (Lead acid)	12V/ 8.5Ah		
	Back-up Time (Typical)	3.5mins (800W)	4mins (1600W)	5mins (2100W)
	Recharge Time	6 Hours After Complete Discharge to Recover 80%		
Transfer Time	Transfer Time	Zero		
LED	LED Status	On-line · Bypass · On-battery · Overload · Battery Low · Fault · Battery Replace · Battery Level · Load Level		
	Alarm	Buzzer		
Interface	DB9	RS232/Dry Contact		
	SNMP Slot	Internal		
	USB	USB Port		
Environment	Noise (At 1 Meter)	45dBA	50dBA	60dBA
	Operating Temperature	0~40℃		
	Humidity	5%~95% (Non-Condensing)		
Safety Approval	Safety	CE		
	EMC	EN62040-2 FCC CLASS B	EN62040-2 FCC CLASS A	
	Lightning	IEEE 62.41 Category A		
Others	Battery Start	Yes		
	Extended Battery Bank	Yes (Optional with Long Time)		
	Long Time Model	Yes (Optional)		
Appearance	Dimension (W×D×H)	440x335x89 /mm 17.3x13.2x3.5 / inch	440x432x89 /mm 17.3x17x3.5 /inch	440x610x89 /mm 17.3x24x3.5 /inch
	Weight	13.0 kg / 28.7 lb	21.0 kg / 46.3 lb	31.0 kg / 68.3 lb

⚡ All specifications are subject to change without prior notice.